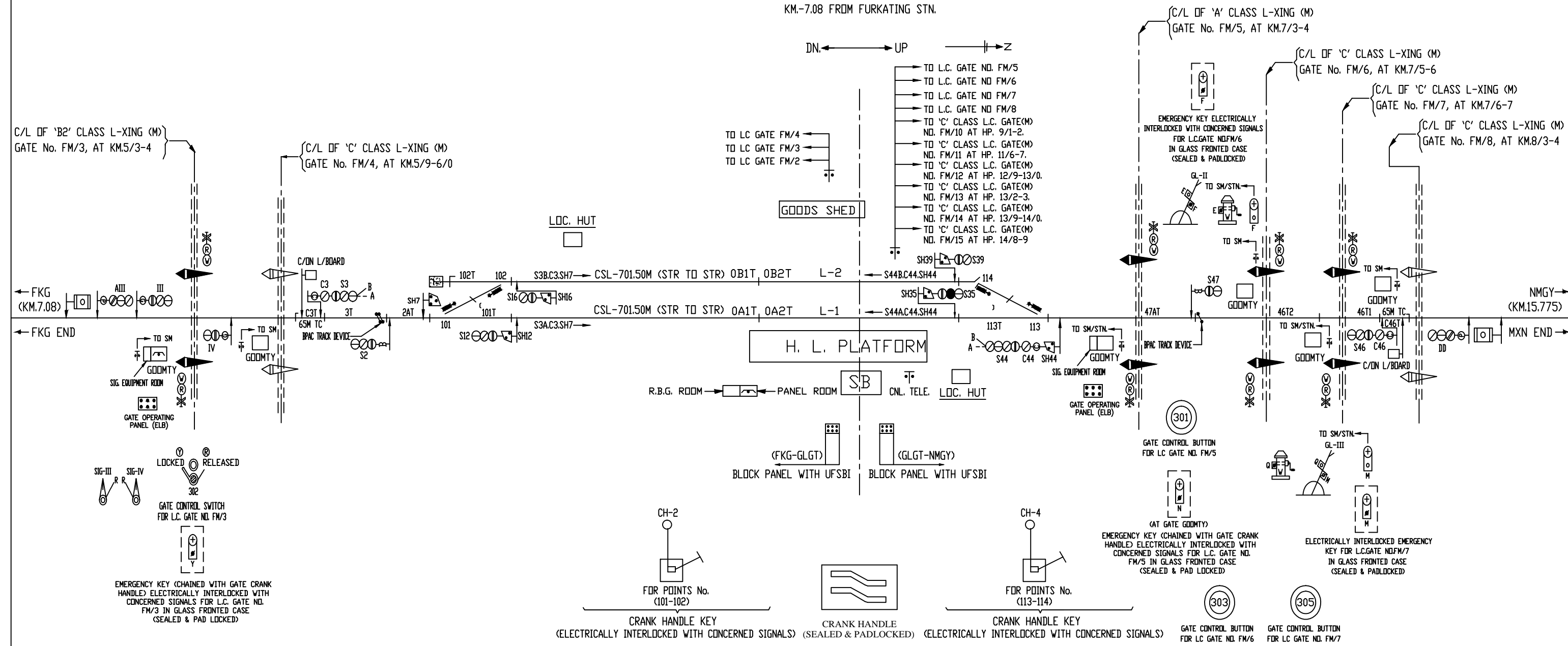
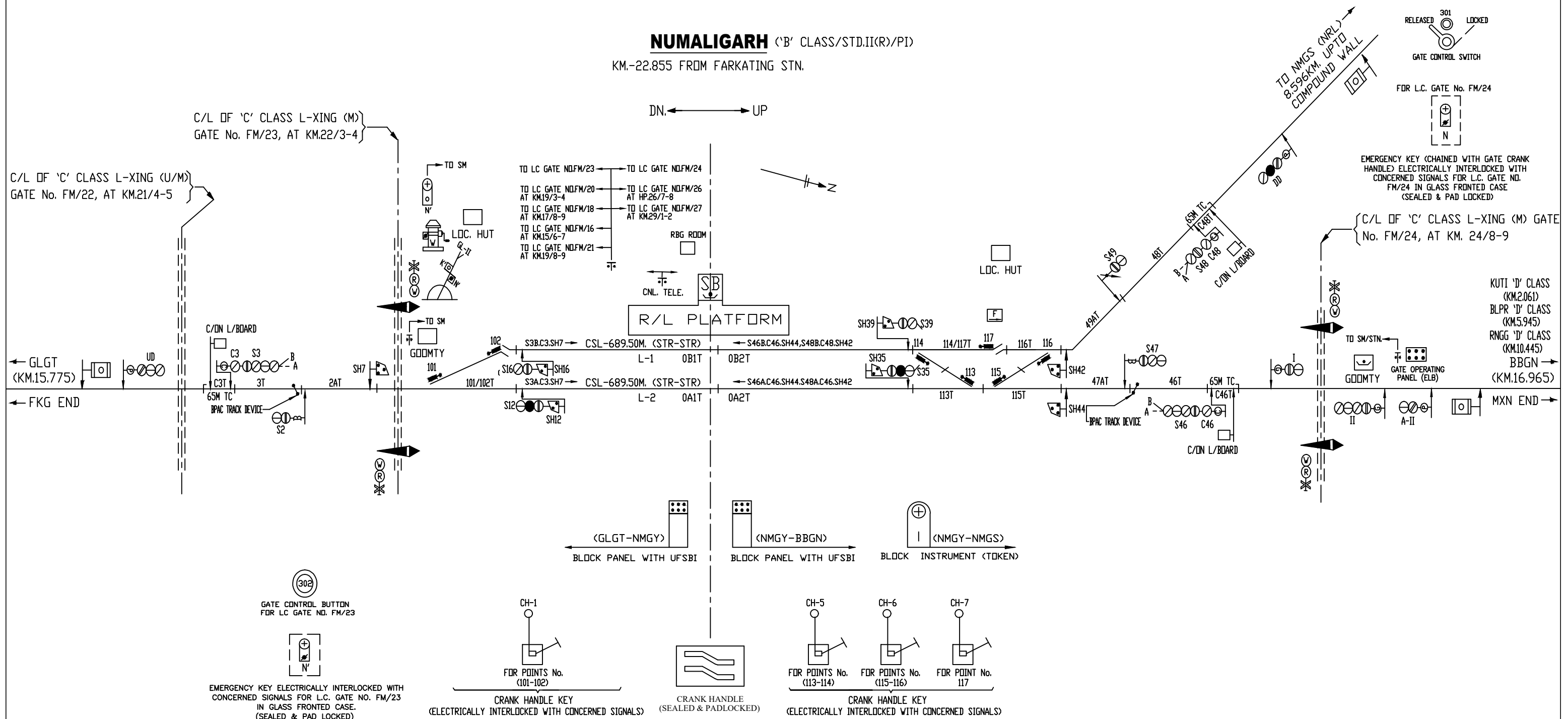


GOLAGHAT 'B' CLASS/STD.II(R)/PI

KM.-7.08 FROM FURKATING STN.





KHUMTAI ('D' CLASS)
KM.-2.061 FROM NMGY



4

BADULIPAR ('D' CLASS)
KM.-5.945 FROM NMGY

RANGALITING (D' CLASS)
KM.-10.445 FROM NMGY

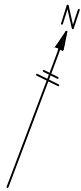
BARUA BAMUNGAON ('B' CLASS/STD.II(R)/PI)
KM.-39.82 FROM FURKATING STN.

NUMALIGARH
(NMGY)
K.M. 16.659
KHUMTAI
(KUTI)
('D' CLASS)
K.M. 14.86
BADULIPAR
(BLPR)
('D' CLASS)
K.M. 11.04
RANGALITING
(RNGG)
('D' CLASS)
K.M. 6.52

C/L OF BR. NO. 98 (1X6.096M)
SPAN GIRDER, KM. 39/1-2

C/L OF 'A' CLASS L-XING (M)
GATE No. FM/33, AT KM.39/6-7

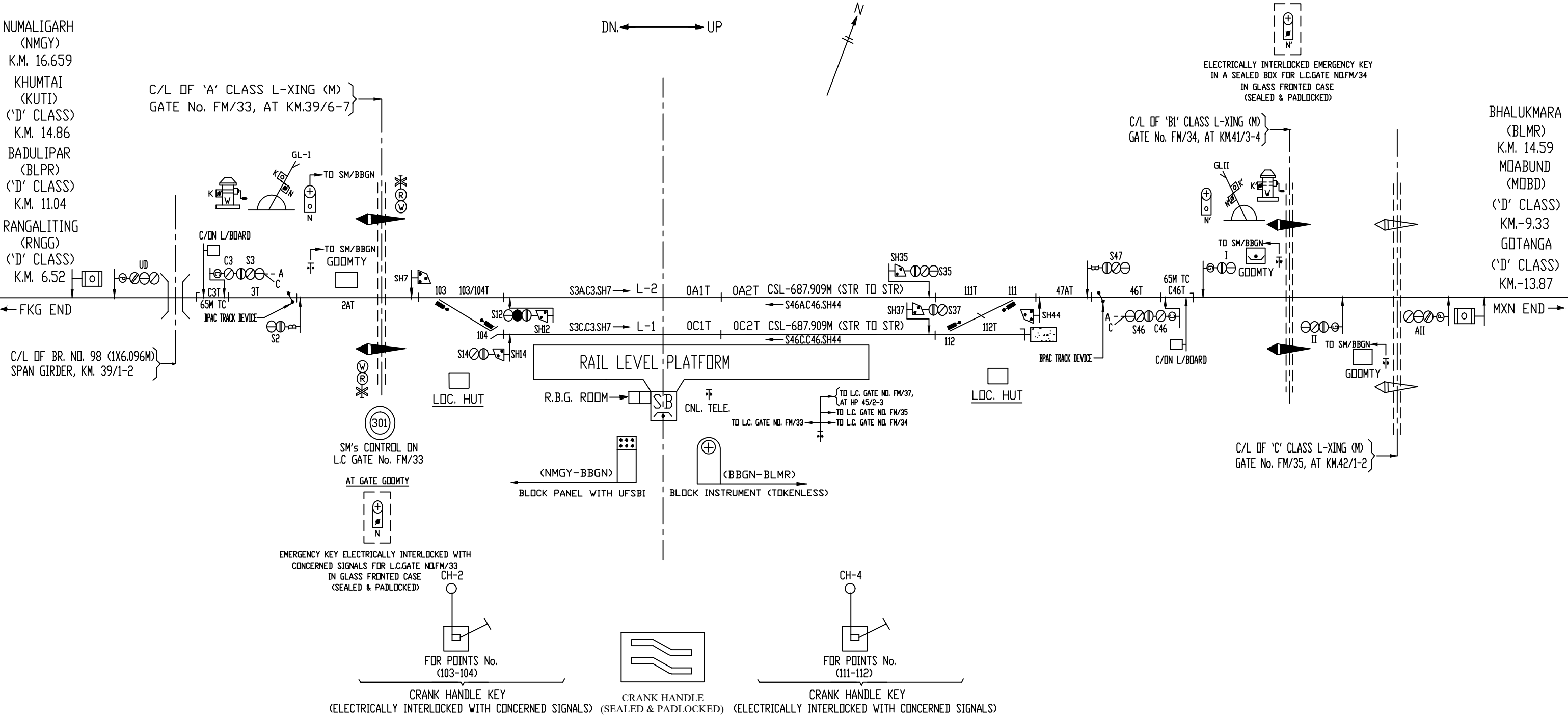
DN. ← → UP



ELECTRICALLY INTERLOCKED EMERGENCY KEY
IN A SEALED BOX FOR L.C.GATE NO.FM/34
IN GLASS FRONTED CASE
(SEALED & PADLOCKED)

C/L OF 'B1' CLASS L-XING (M)
GATE No. FM/34, AT KM.41/3-4

BHALUKMARA
(BLMR)
K.M. 14.59
MOABUND
(MOBD)
('D' CLASS)
KM.-9.33
GOTANGA
('D' CLASS)
KM.-13.87

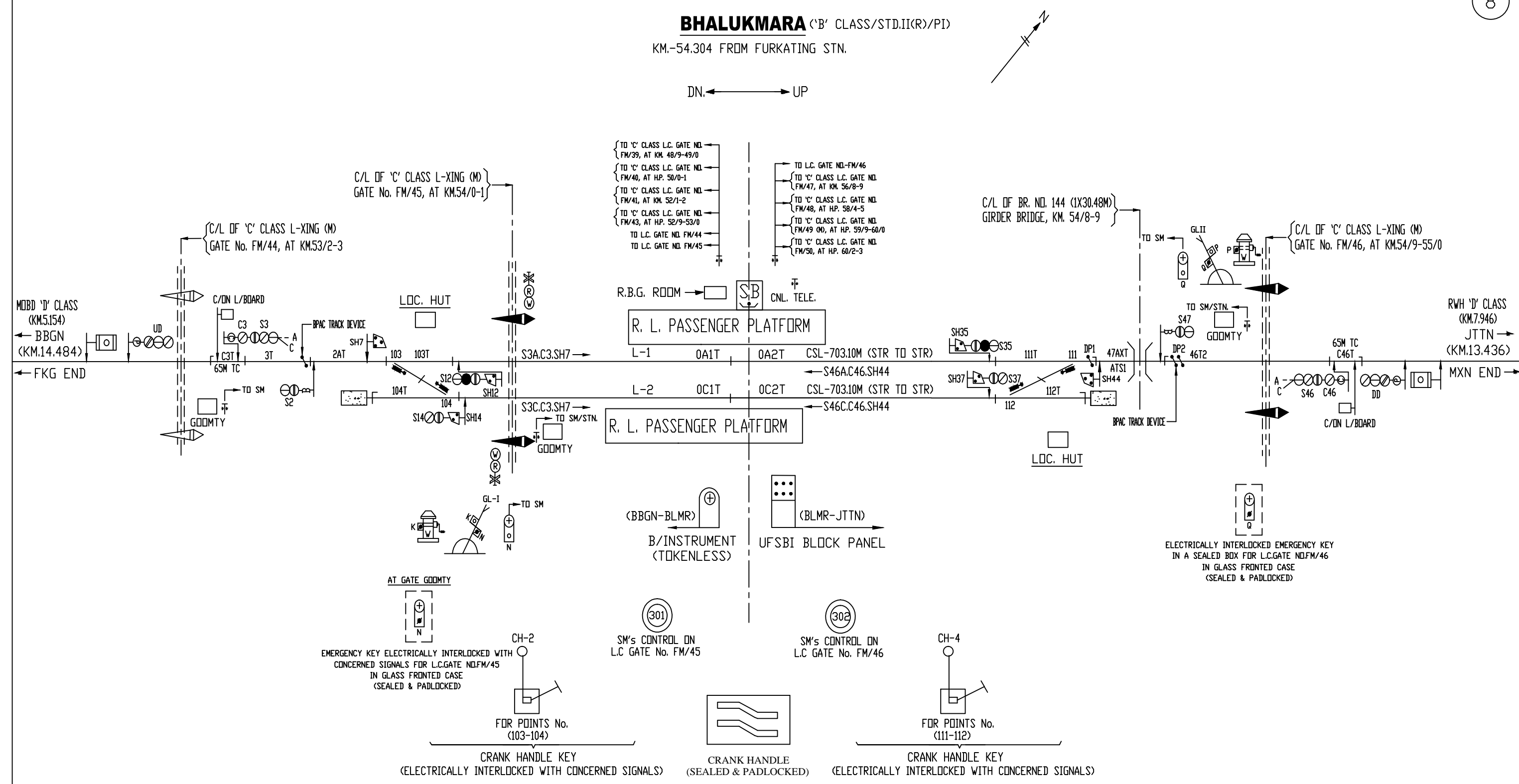


MOABAND ('D' CLASS)
KM.-5.154 FROM BLMR STN.

BHALUKMARA 'B' CLASS/STD.II(R)/PI

KM.-54.304 FROM FURKATING STN.

DN. ← → UP



ROWRIAH (D' CLASS)
KM.-7.946 FROM BLMR STN.

