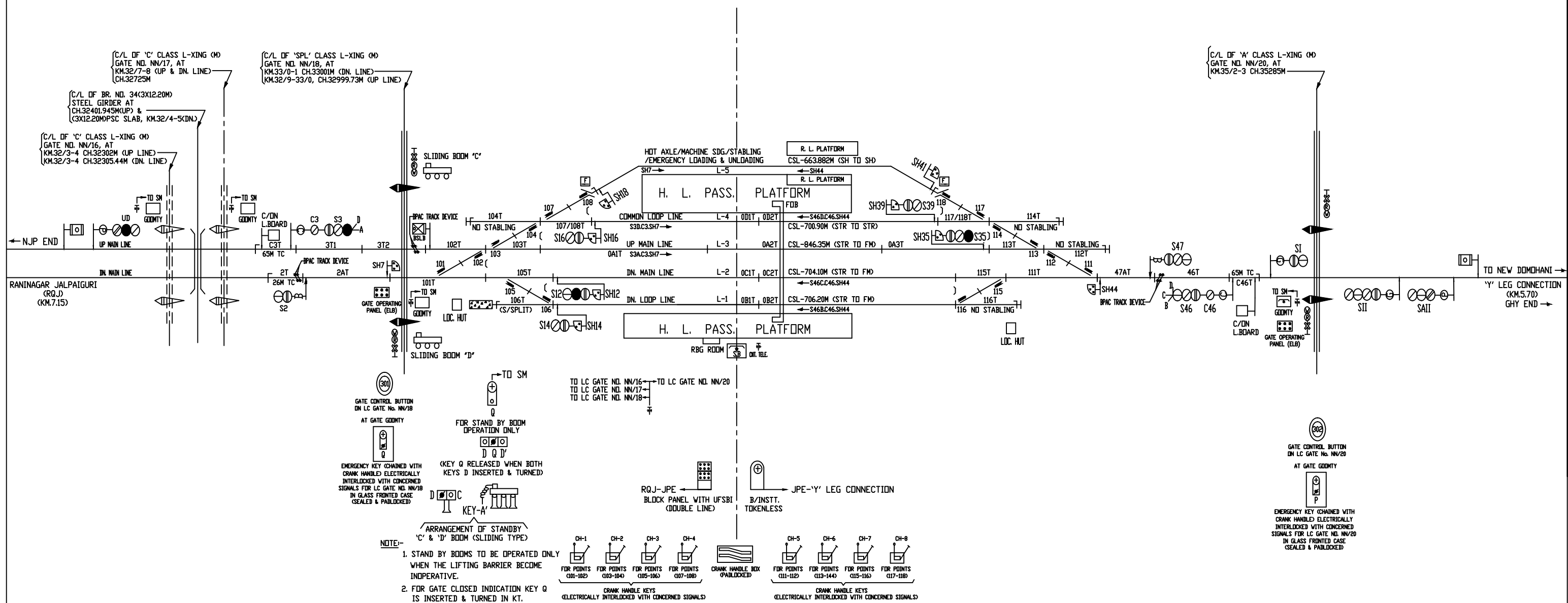


# JALPAIGURI ROAD 'C' CLASS/STD.-II(R)/EID

KM.-33.600 FROM NJP

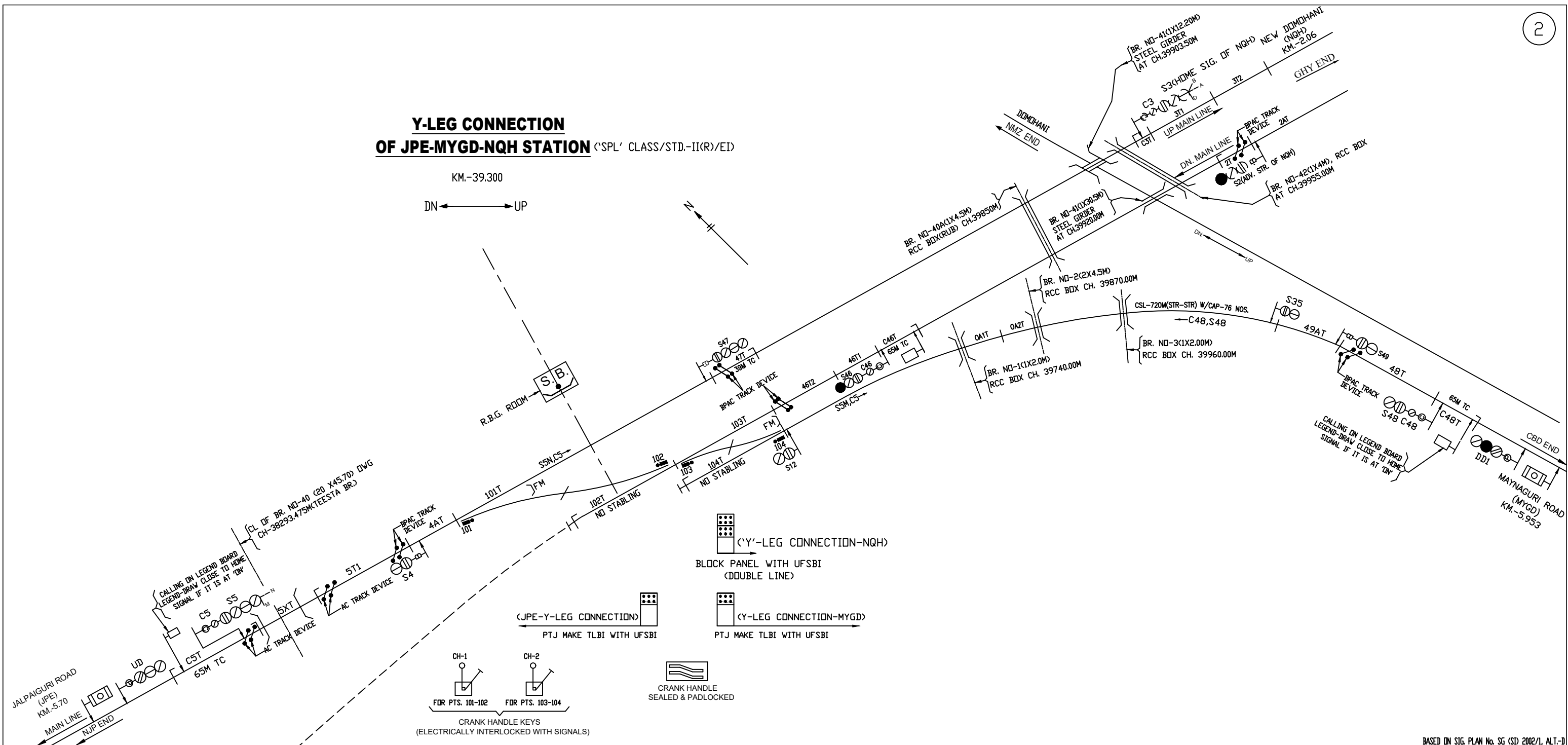
DN ← → UP

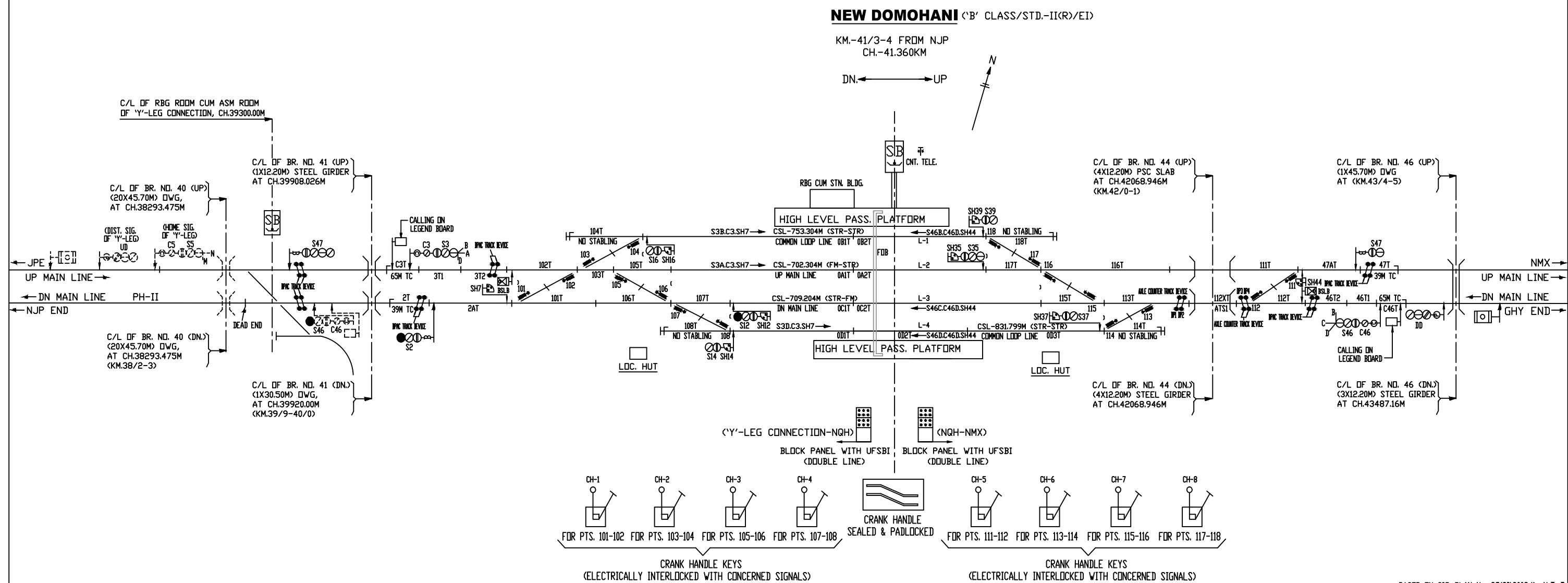


**Y-LEG CONNECTION**  
**OF JPE-MYGD-NQH STATION ('SPL' CLASS/STD.-II(R)/EID)**

KM.-39.300

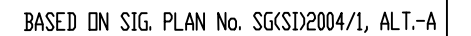
DN  $\longleftrightarrow$  UF





BASED ON SIG. PLAN No. SG(SI)2003/1, ALT.-B

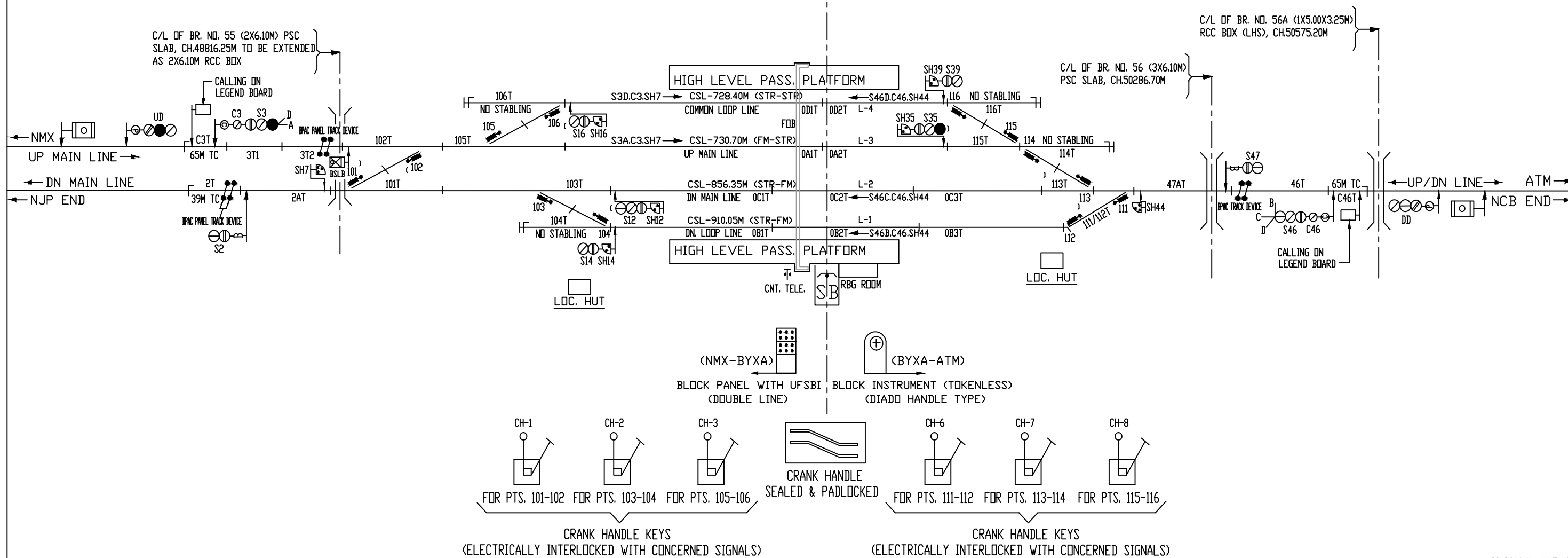
DN.  $\longleftrightarrow$  UP



# **BETGARA** ('B' CLASS/STD.-II(R)/EI)

KM.-49/6-7 FROM NJP  
CH.-49650.00M

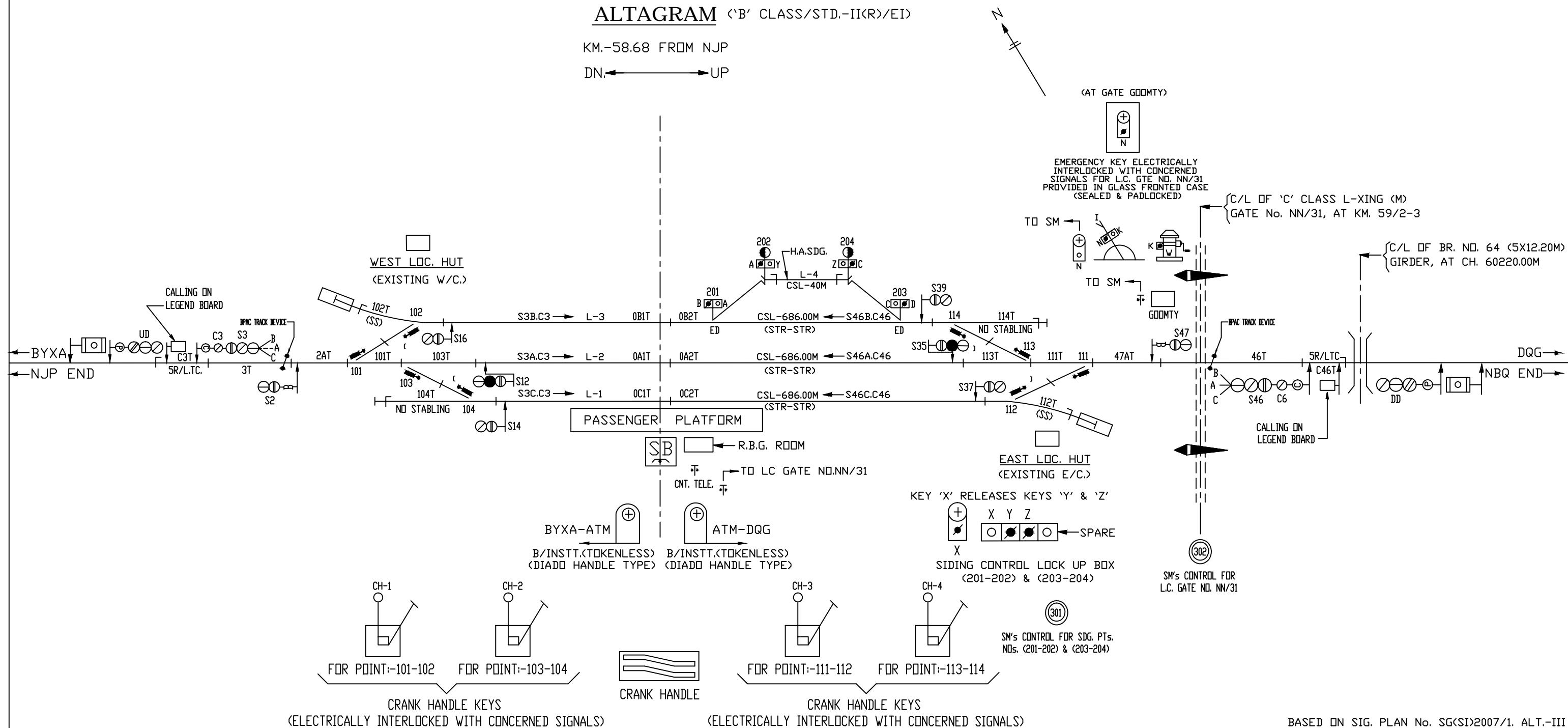
DN. ← → UP



# ALTAGRAM ('B' CLASS/STD.-II(R)/EI)

KM.-58.68 FROM NJP

DN. ← → UP





KM.-71.97 FROM NJP

UP  $\longrightarrow$





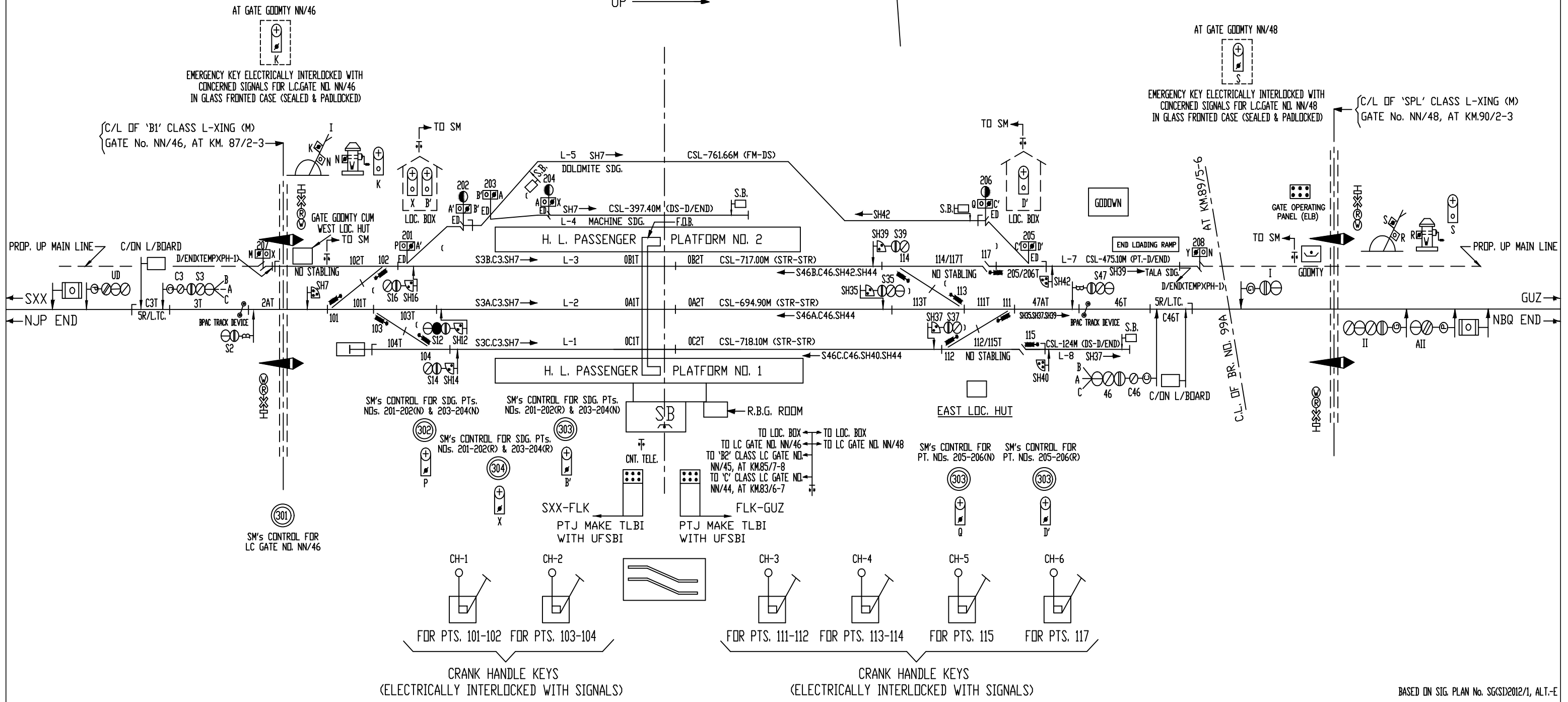


9

**FALAKATA** ('B' CLASS/STD.-II(R)/EI)

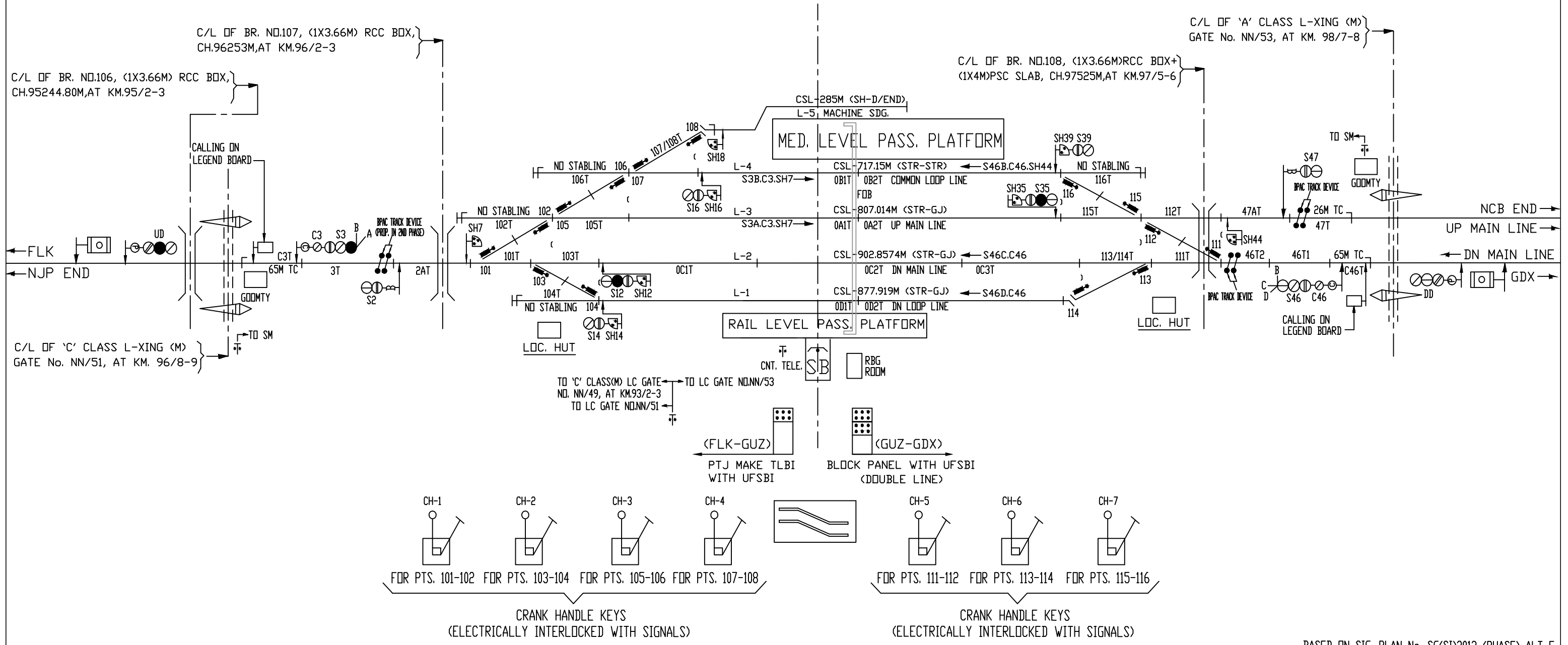
KM.-88.06 FROM NJP

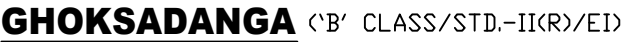
UP →



# GUMANIHAT 'B' CLASS/STD.-II(R)/EI

KM.-96.87 FROM NJP  
DN. ← → UP





DN.  $\longleftrightarrow$  UP



**PUNDIBARI** ('B' CLASS/STD.-II(R)/EI)

KM.-115/9-116/0 FROM C/L OF NJP  
CH.-115900.00M

DN.  $\longleftrightarrow$  UP

TO SM →

+

○

M

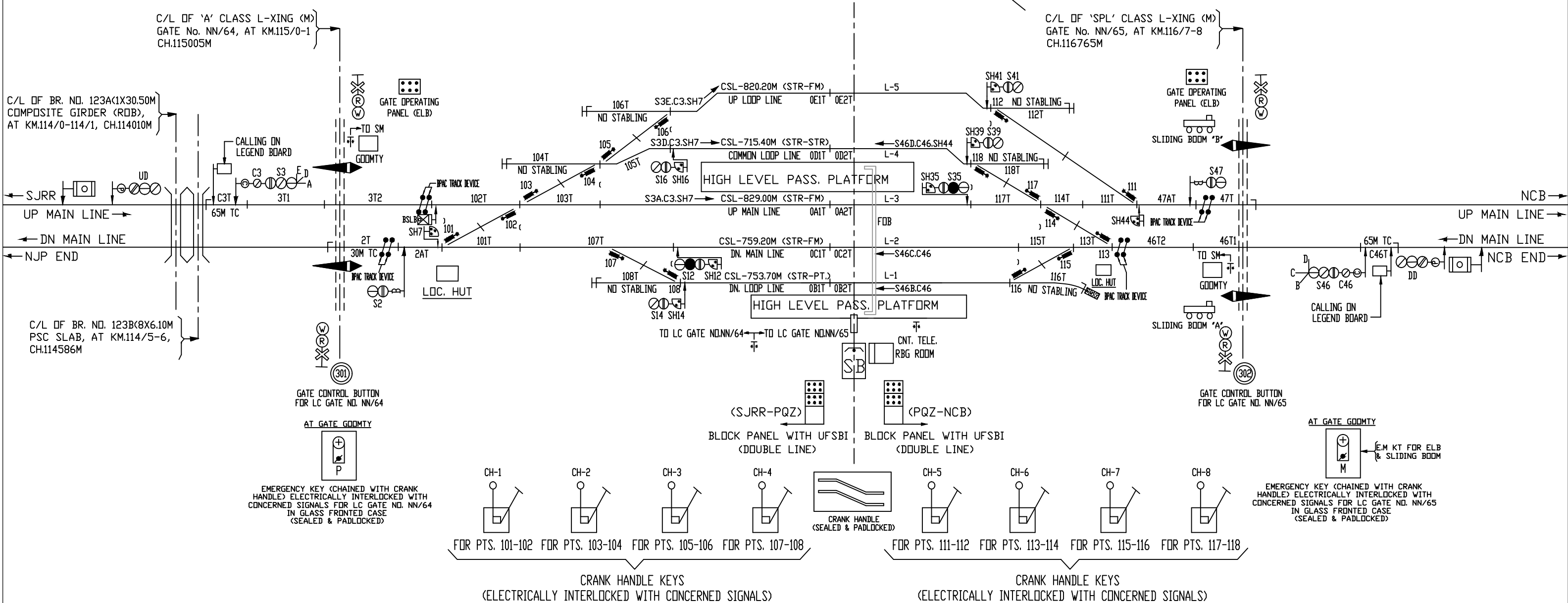
FOR STAND BY BOOM  
OPERATION ONLY


  
 (KEY 'M' RELEASED WHEN BOTH  
 KEYS 'B' INSERTED & TURNED)

Diagram illustrating the arrangement of standby 'A' & 'B' boom (sliding type). The diagram shows a horizontal beam with a sliding mechanism. A key is shown inserted into the sliding mechanism, labeled "KEY-A'". The beam is labeled "ARRANGEMENT OF STANDBY 'A' & 'B' BOOM (SLIDING TYPE)".

**NOTE:-**

1. STAND BY BOOMS TO BE OPERATED ONLY WHEN THE LIFTING BARRIER BECOME INOPERATIVE.
2. FOR GATE CLOSED INDICATION KEY 'M' IS INSERTED & TURNED IN KT.



BASED ON SIG. PLAN No. SG(SI)2017/2, ALT.-D

